



**applies to Version 1.11**

## **DICOM 3.0 Conformance Statement**

## Conformance Statement Overview

Table.1 <i>Network Services</i>		
<i>SOP Classes</i>	<i>User of Service (SCU)</i>	<i>Provider of Service (SCP)</i>
<b>Query and Retrieve</b>		
Study Root Query/Retrieve Information Model—Find	Yes	No
Study Root Query/Retrieve Information Model—Move	Yes	No
<b>Transfer</b>		
Stored Print Storage	Yes	Yes
Hardcopy Grayscale Image Storage	Yes	Yes
Hardcopy Color Image Storage	Yes	Yes
Computed Radiography Image Storage	Yes	Yes
Digital X-Ray Image Storage (Presentation)	Yes	Yes
Digital X-Ray Image Storage (Processing)	Yes	Yes
Digital Mammography Image Storage (Presentation)	Yes	Yes
Digital Mammography Image Storage (Processing)	Yes	Yes
Digital Intra-oral X-Ray Image Storage (Presentation)	Yes	Yes
Digital Intra-oral X-Ray Image Storage (Processing)	Yes	Yes
Ultrasound Multi-frame Image Storage	Yes	Yes
Ultrasound Multi-frame Image Storage	Yes	Yes
CT Image Storage	Yes	Yes
MR Image Storage	Yes	Yes
Enhanced MR Image Storage	Yes	Yes
MR Spectroscopy Storage	Yes	Yes
Ultrasound Image Storage	Yes	Yes
Ultrasound Image Storage	Yes	Yes
Secondary Capture Image Storage	Yes	Yes
Multi-frame Single Bit Secondary Capture Image Storage	Yes	Yes
Multi-frame Grayscale Byte Secondary Capture Image Storage	Yes	Yes
Multi-frame Grayscale Word Secondary Capture Image Storage	Yes	Yes
Multi-frame True Color Secondary Capture Image Storage	Yes	Yes
Stand-alone Overlay Storage	Yes	Yes
Stand-alone Curve Storage	Yes	Yes
12-Lead ECG Waveform	Yes	Yes



General ECG Waveform	Yes	Yes
Ambulatory ECG Waveform	Yes	Yes
Hemodynamic Waveform	Yes	Yes
Cardiac Electrophysiology Waveform	Yes	Yes
Basic Voice Audio Waveform	Yes	Yes
Stand-alone Modality LUT Storage	Yes	Yes
Stand-alone VOI LUT Storage	Yes	Yes
Grayscale Softcopy Presentation State Storage	Yes	Yes
Color Softcopy Presentation State Storage	Yes	Yes
Pseudo Color Softcopy Presentation State Storage	Yes	Yes
Blending Softcopy Presentation State Storage	Yes	Yes
X-Ray Angiographic Image Storage	Yes	Yes
X-Ray Radiofluoroscopic Image Storage	Yes	Yes
X-Ray Angiographic Bi-plane Image Storage	Yes	Yes
Nuclear Medicine Image Storage	Yes	Yes
Raw Data Storage	Yes	Yes
VL Endoscopic Image Storage	Yes	Yes
Video Endoscopic Storage SOP Class	Yes	Yes
VL Microscopic Image	Yes	Yes
VL Slide-Coordinates Microscopic Image Storage	Yes	Yes
VL Photographic Image Storage	Yes	Yes
Ophthalmic Photography IOD 8 Bit Image Storage	Yes	Yes
Ophthalmic Photography IOD 16 Bit Image Storage	Yes	Yes
Stereometric Relationship Image Storage	Yes	Yes
Basic Text SR	Yes	Yes
Enhanced SR	Yes	Yes
Comprehensive SR	Yes	Yes
Mammography CAD SR	Yes	Yes
Key Image Object Storage SOP Class	Yes	Yes
X-Ray Radiation Dose SR	Yes	Yes
Encapsulated PDF Storage SOP Class	Yes	Yes
<b>Workflow Management</b>		
Modality Work List Information Model—C-Find	Yes	No
Modality Performed Procedure Step	Yes	No
Storage Commitment Model Push	Yes	Yes

<b>Table 2</b> <i>Media Services</i>		
<i>Media Storage Application Profile</i>	<i>Write Files (FSC)</i>	<i>Read Files (FSR)</i>
<b>CD—Recordable</b>		
General Purpose CD-R	See conformance note	Yes
General Purpose Secure CD-R	See conformance note	Yes
<b>DVD—Recordable</b>		
General Purpose DVD-R	See conformance note	Yes
General Purpose Secure DVD-R	See conformance note	Yes

## Table of Contents

1.	Conformance Statement Overview .....	2
3.	Introduction .....	8
3.1.	Revision History .....	8
3.2.	Legal Notices.....	8
3.2.1.	Copyright Notice.....	8
3.2.2.	Trademark Acknowledgements .....	8
3.2.3.	Contact Address .....	8
3.3.	Definitions, Terms and Abbreviations.....	8
3.4.	References.....	8
4.	Implementation Model.....	9
4.1.	Storage SCP AE.....	9
4.1.1.	Application Data Flow Diagram.....	9
4.1.2.	Functional Definition of AE .....	9
4.1.3.	Sequencing of Real-World Activities .....	9
4.2.	Storage SCU AE .....	10
4.2.1.	Application Data Flow Diagram.....	10
4.2.2.	Functional Definition of AE .....	10
4.2.3.	Sequencing of Real-World Activities .....	10
4.3.	Query and Retrieve SCU AE .....	11
4.3.1.	Application Data Flow Diagram.....	11
4.3.2.	Functional Definitions of AE.....	11
4.3.3.	Sequencing of Real-World Activities .....	12
4.4.	DICOM Media Exporter AE .....	13
4.4.1.	Application Data Flow Diagram.....	13
4.4.2.	Functional Definitions of AE.....	13
4.4.3.	Sequencing of Real-World Activities .....	13
4.5.	DICOM Media Importer AE.....	14
4.5.1.	Application Data Flow Diagram.....	14
4.5.2.	Functional Definitions of AE.....	14
4.5.3.	Sequencing of Real-World Activities .....	14

- 4.6. Import Integrator AE ..... 15
  - 4.6.1. Application Data Flow Diagram..... 15
  - 4.6.2. Functional Definitions of AE..... 15
  - 4.6.3. Sequencing of Real-World Activities ..... 16
- 4.7. Verification AE ..... 17
  - 4.7.1. Application Data Flow Diagram..... 17
  - 4.7.2. Functional Definitions of AE..... 17
  - 4.7.3. Sequencing of Real-World Activities ..... 18
- 5. AE Specifications..... 18
  - 5.1. Storage SCP AE..... 18
    - 5.1.1. SOP Classes ..... 18
    - 5.1.2. Association Establishment Policies..... 20
    - 5.1.3. Association Initiation by Real-World Activity..... 21
    - 5.1.4. Association Acceptance Policy ..... 21
  - 5.2. Storage SCU AE ..... 23
    - 5.2.1. SOP Classes ..... 23
    - 5.2.2. Association Establishment Policies..... 24
    - 5.2.3. Association Initiation by Real-World Activity..... 25
    - 5.2.4. Association Acceptance Policy ..... 25
  - 5.3. Query and Retrieve SCU AE ..... 26
    - 5.3.1. SOP Classes ..... 26
    - 5.3.2. Association Establishment Policies..... 26
    - 5.3.3. Association Initiation by Real-World Activity..... 27
    - 5.3.4. Sop Specific Conformance to C-Move SOP Class..... 28
    - 5.3.5. Association Acceptance Policy ..... 28
  - 5.4. DICOM Media Exporter AE ..... 29
    - 5.4.2. File Meta Information..... 29
    - 5.4.3. Real-World Activity—Store Images on DICOM Media ..... 29
  - 5.5. DICOM Media Importer AE..... 32
    - 5.5.2. Initiation by Real-World Activity ..... 32
  - 5.6. Import Integrator AE ..... 36

- 5.6.1. SOP Classes ..... 36
- 5.6.2. Association Establishment Policies..... 36
- 5.6.3. Association Initiation by Real-World Activity..... 37
- 5.6.4. Sop Specific Conformance to Modality Work List Information Model—C-Find SOP Class. 38
- 5.6.5. Sop Specific Conformance to Storage Commitment Push Model SOP Class ..... 38
- 5.6.6. Sop Specific Conformance to Modality Performed Procedure Step SOP Class ..... 38
- 5.6.7. Association Acceptance Policy ..... 39
- 5.7. Verification AE ..... 41
  - 5.7.1. SOP Classes ..... 41
  - 5.7.2. Association Establishment Policies..... 41
  - 5.7.3. Association Initiation by Real-World Activity..... 42
  - 5.7.4. Association Acceptance for Real-World Activity—Accept Verification ..... 42
- 6. Communication Profiles..... 43
  - 6.1. Supported Communication Stacks ..... 43
  - 6.2. TCP/IP Stack..... 43
  - 6.3. API ..... 43
  - 6.4. Physical Media Support..... 43
- 7. Support of Extended Character Sets..... 43
- 8. Configuration..... 44
  - 8.1. Configurable Parameters..... 44
    - 8.1.1. Host Configuration ..... 44
    - 8.1.2. Peer Configuration ..... 44
- 9. Security ..... 44
  - 9.1. Security Profiles ..... 44
  - 9.2. Association Level Security ..... 44
  - 9.3. Application Level Security ..... 44

## Introduction

## Revision History

Revision	Author	Comments	Date
1	Timothy Krehl	Created	06/16/2008
2	Dion Barrier	Updated	07/23/2009
3	Dion Barrier	Updated	08/23/2010
4	Dion Barrier	Updated	09/07/2010
5	Lara Zimmeroff	Updated	02/13/2013
6	Lara Zimmeroff	Updated	09/21/2015

## Legal Notices

### Copyright Notice

©2009-2020 Sorna Corporation. All rights reserved, worldwide.

- No part of this document may be copied or reprinted, in whole or part, without written permission.
- The contents of this document are subject to change without notice or legal obligation.

### Trademark Acknowledgements

Reviewer is a registered trademark of Sorna Corporation. Windows is a registered trademark of Microsoft Corporation in the United States and other countries. This document may include trademarks or registered trademarks of other companies.

### Contact Address

Sorna Corporation  
 2020 Silver Bell Road, Suite 17  
 Eagan, MN 55122

## Definitions, Terms and Abbreviations

AE	Application Entity	NEMA	National Electrical Manufacturers Association
ANSI	American National Standard Institute	PPS	Performed Procedure Step
DICOM	Digital Imaging and Communications in Medicine	SCP	Service Class Provider
FSR	File Set Reader	SCU	Service Class User
FSC	File Set Creator	SOP	Service-Object Pair
IOD	Information Object Definition	TCP/IP	Transmission Control Protocol/Internet Protocol
IHE	Integrating the Healthcare Enterprise initiative	UID	Unique Identifier
ISO	International Organization for Standardization	XML	eXtensible Markup Language
MWL	Modality Work List		

## References

- [DICOM] Digital Imaging and Communications in Medicine (DICOM), NEMA PS 3.1-3.18, 2007  
 [IHE] IHE Technical Framework, vol. 1: Integration Profiles, Rev. 8.0, 2007



## Implementation Model

### Storage SCP AE

#### Application Data Flow Diagram

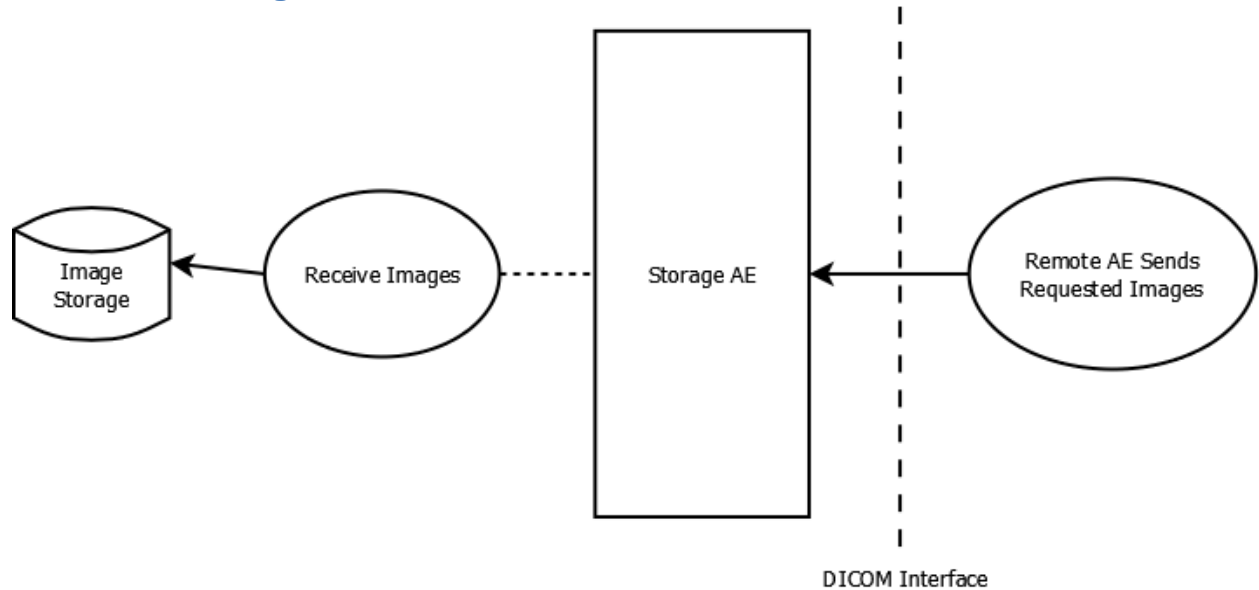


Figure 1—Storage SCP AE Dataflow

#### Functional Definition of AE

The Storage SCP AE accepts connections to the configured AE title’s presentation address. Associations having presentation contexts with Storage SOP classes will be accepted.

#### Receive Images

The Receive Images operation is initiated by a successful association with a remote AE requesting to store images. Images received from the remote AE are sent to an internal image storage system.

#### Sequencing of Real-World Activities

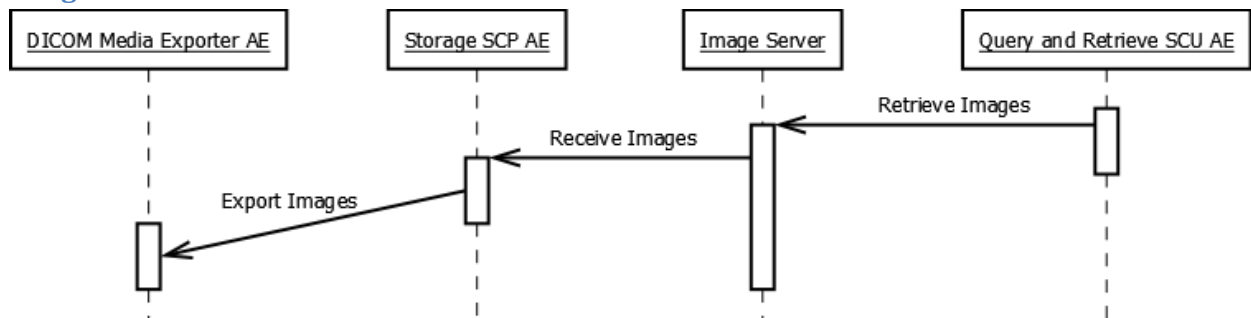


Figure 2—Example Real-World Activity for Storage SCP AE

## Storage SCU AE

### Application Data Flow Diagram

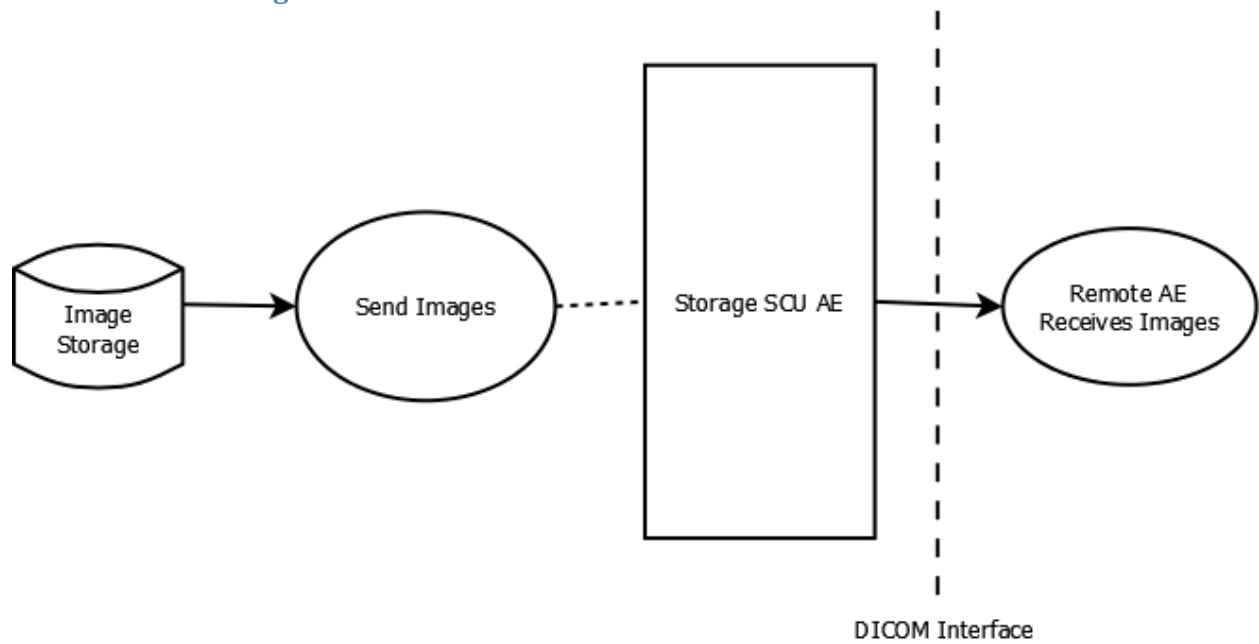


Figure 3—Storage SCU AE Dataflow

### Functional Definition of AE

#### *Send Images*

The Send Images operation is initiated in response to Query and Retrieve or DICOM DISC media import operations. An association is initiated with the destination AE and is followed by a transfer of the requested images using C-Store operations.

### Sequencing of Real-World Activities

Not Applicable

## Query and Retrieve SCU AE

### Application Data Flow Diagram

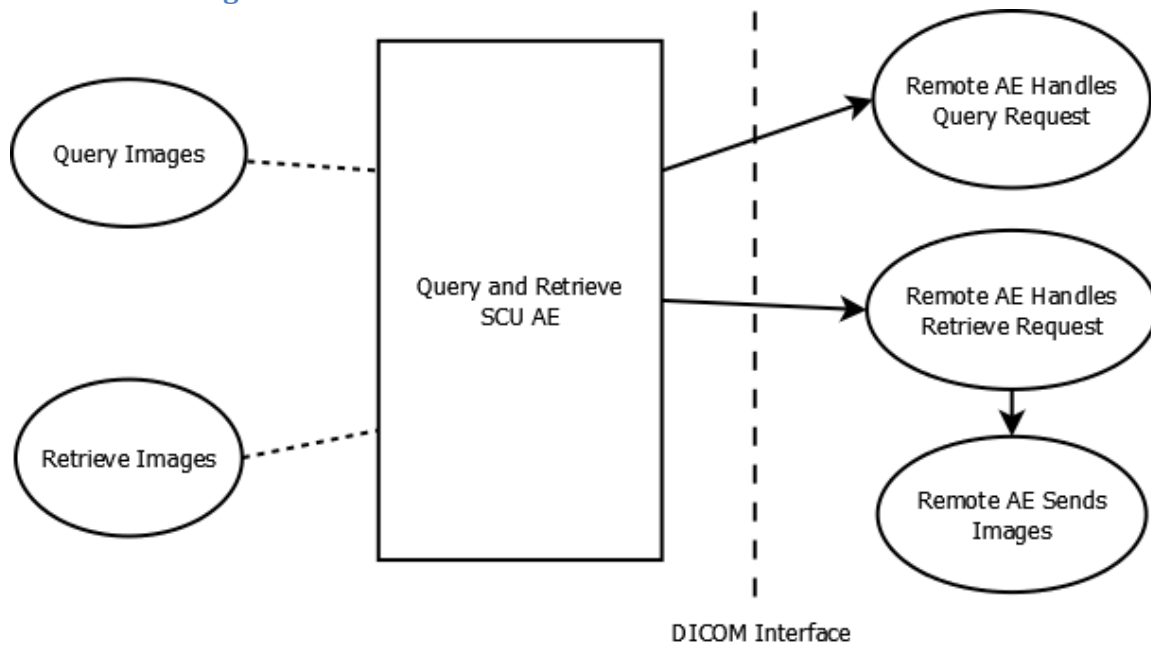


Figure 4—Query and Retrieve SCU AE Dataflow

### Functional Definitions of AE

#### Query Images

Query Images establishes an association with a DICOM Query/Retrieve SCP using a presentation context having a Find SOP class. A Find request is sent with user specified query fields.

#### Retrieve Images

Retrieve Images establishes an association with a DICOM Query/Retrieve SCP using a presentation context having a Move SOP class. A Move request is sent for selected studies.

## Sequencing of Real-World Activities

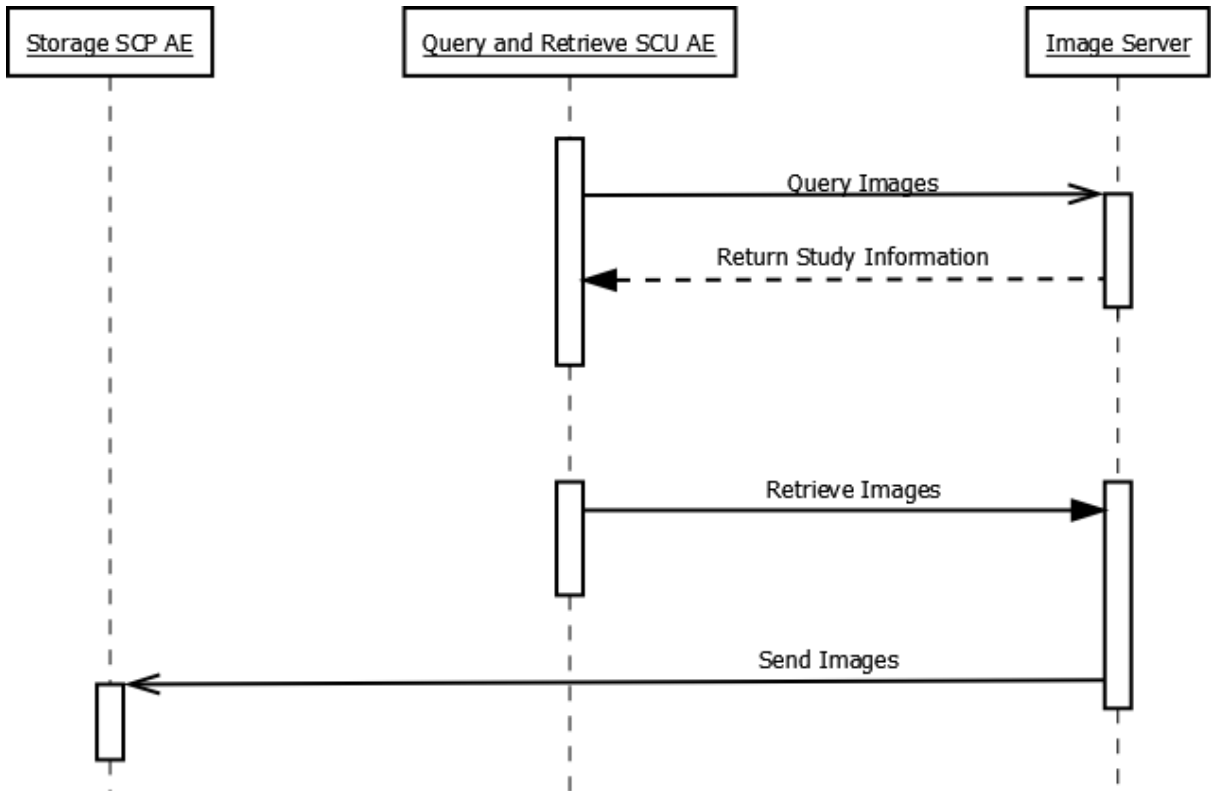


Figure 5—Example Real-World Activity for Query and Retrieve SCU AE

## DICOM Media Exporter AE

### Application Data Flow Diagram

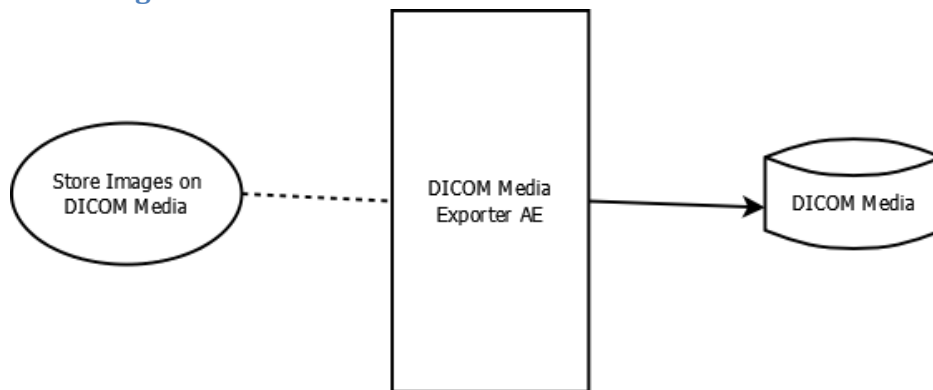


Figure 6—DICOM Media Exporter AE Dataflow

### Functional Definitions of AE

The DICOM Media Exporter AE is responsible for the export of images to physical media. These media may take the form of a DICOM DISC (CD/DVD), removable media including portable hard drives and flash drives, or an online file system. Export operations include the following options:

- **Data Encryption**—writes images in Secure DICOM File Format.
- **Re-identification**—modifies patient demographic information.
- **Create File Set**—creates a DICOMDIR describing the exported images.

### Store Images on DICOM Media

The operation Store Images on DICOM DISC takes images imported into Reviewer and conveys them to the specified media according to selected export options. Write verification may be enabled for this DISC media types.

### Sequencing of Real-World Activities

Not applicable

## DICOM Media Importer AE

### Application Data Flow Diagram

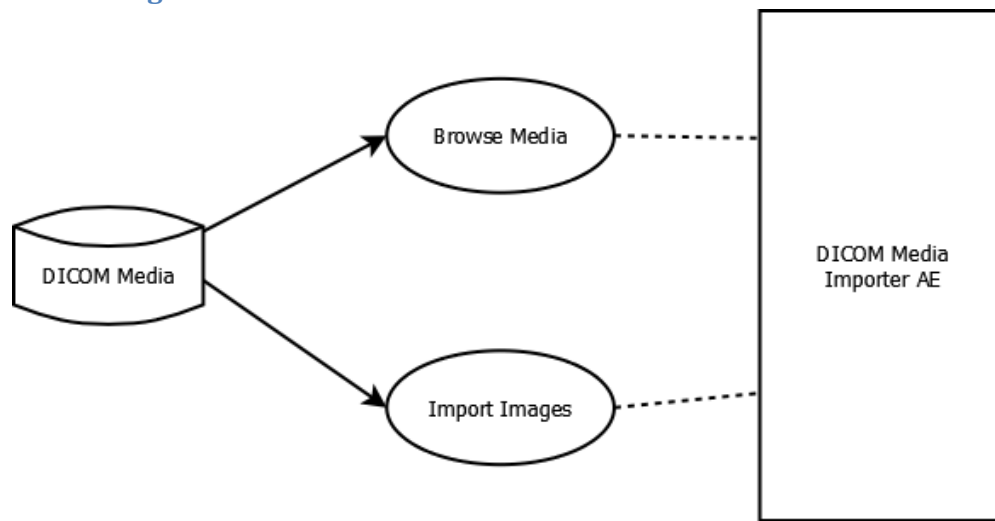


Figure 7—DICOM Media Importer AE Dataflow

### Functional Definitions of AE

The DICOM Media Importer AE is responsible for the browsing and importation of standard or Secure DICOM image files from physical media. These media may take the form of a DICOM DISC (CD/DVD), removable media including portable hard drives and flash drives, or an online file system.

#### *Browse Media*

The Browse Media operation interrogates DICOM media for information about the contained images. With respect to DICOM DISCs and removable media, should a DICOMDIR file be present it will be leveraged.

#### *Import Images*

The Import Images operation will read DICOM files from the specified media into the Reviewer application for subsequent viewing or transmission.

### Sequencing of Real-World Activities

Not applicable

## Import Integrator AE

### Application Data Flow Diagram

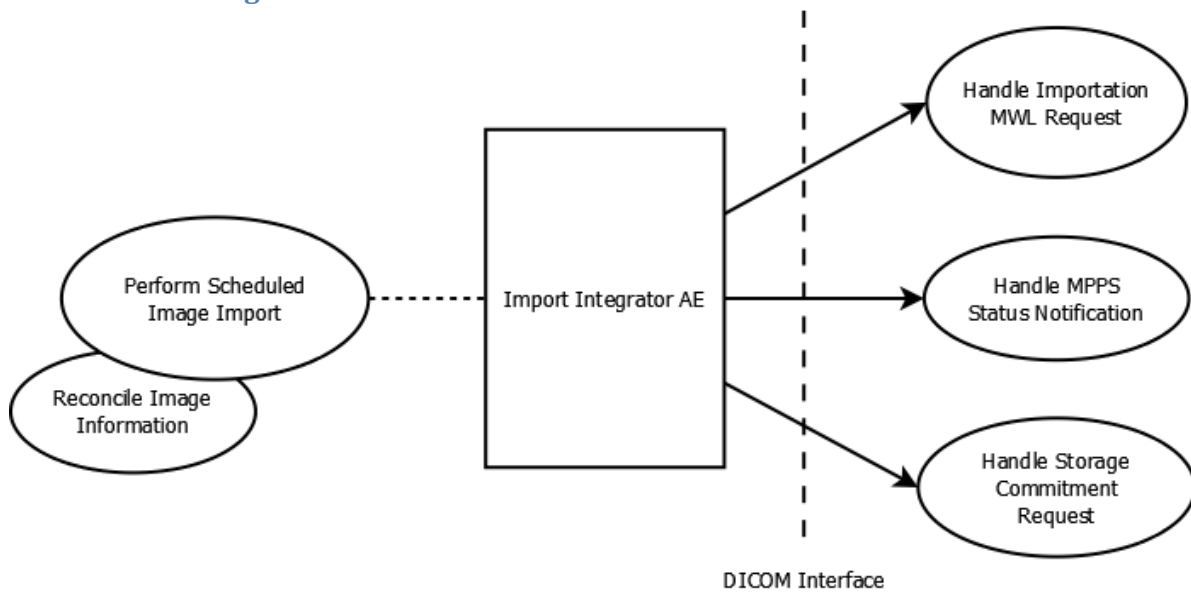


Figure 8—Import Integrator AE Dataflow

### Functional Definitions of AE

The Import Integrator AE provides the ability to integrate images derived from an external source into an image archive as described by the IHE Import Reconciliation Workflow.

#### *Perform Scheduled Image Import*

The Perform Scheduled Image Import operation reconciles image information against an import work list queried from MWL provider. Images are stored and optionally committed to an image archival system.

## Sequencing of Real-World Activities

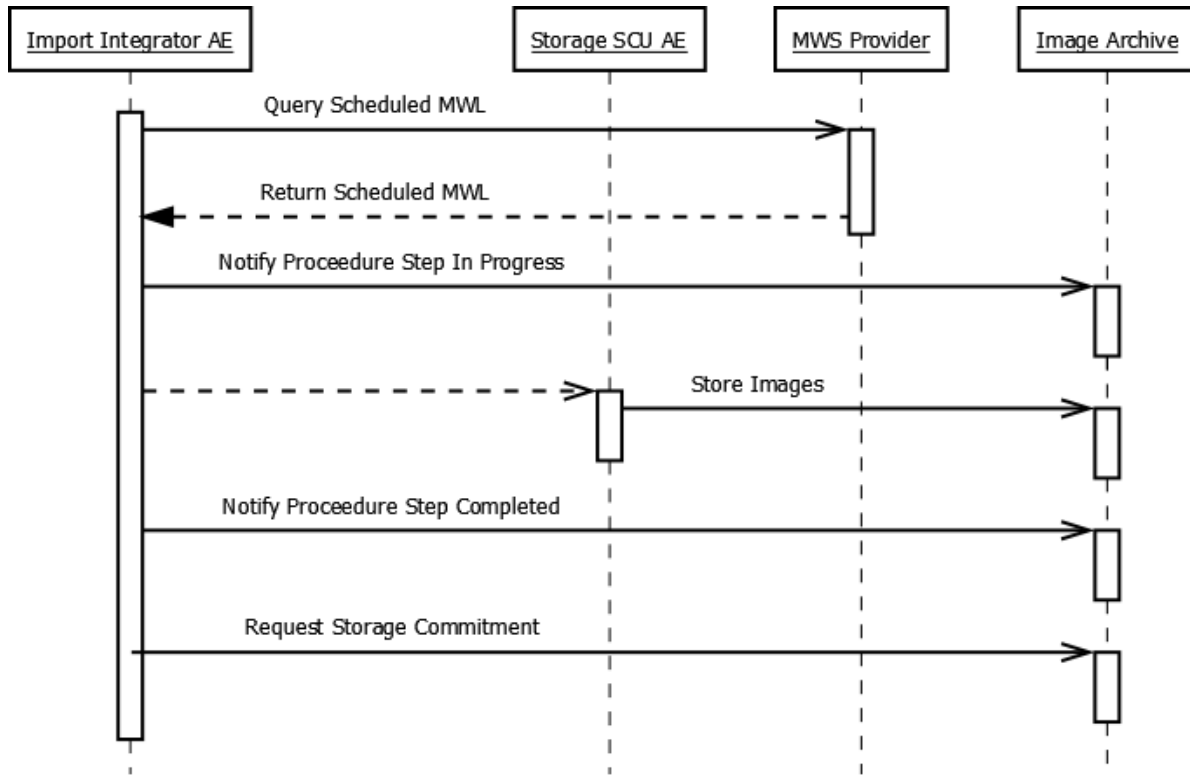


Figure 9—Example Real-World Activity for Import Integrator AE



## Verification AE

### Application Data Flow Diagram

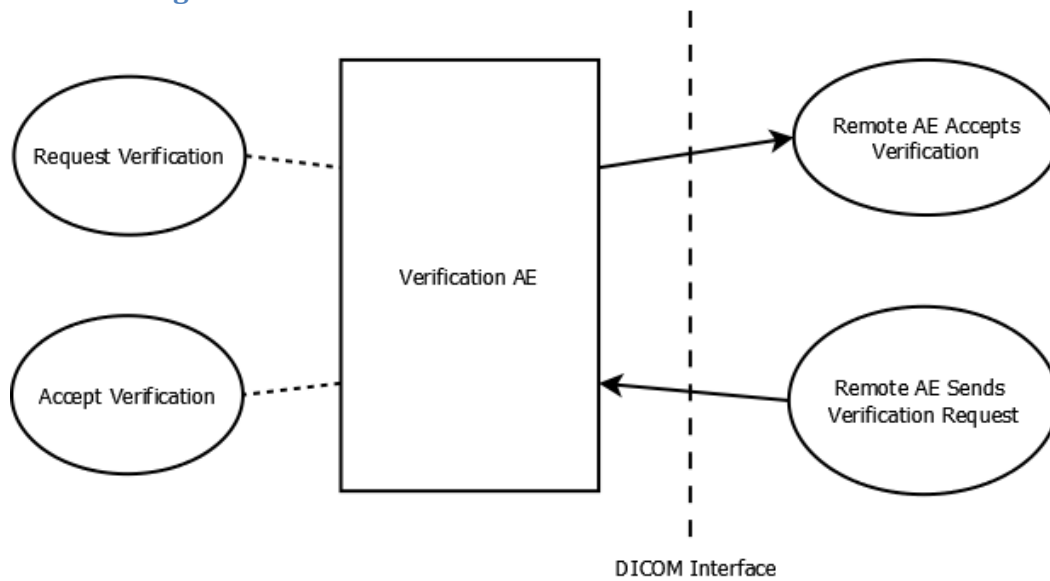


Figure 10—Verification AE Dataflow

### Functional Definitions of AE

#### *Request Verification*

The Verification AE acts as an SCU by sending requests with a presentation context having a Verification SOP class.

#### *Accept Verification*

The Verification AE acts as an SCP by accepting connections for associations having presentation contexts for Verification SOP classes.

### Sequencing of Real-World Activities

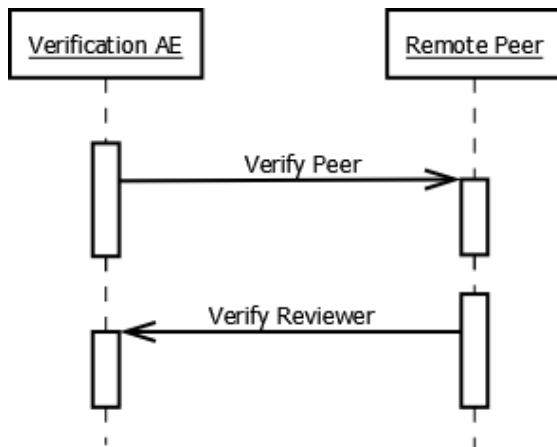


Figure 11—Example Real-World Activity for Verification AE

## AE Specifications

### Storage SCP AE

#### SOP Classes

The Storage SCP AE provides Standard Conformance to the following SOP classes:

<i>Table 3 Supported SOP Classes</i>			
<i>SOP Class Name</i>	<i>SOP Class UID</i>	<i>SCU</i>	<i>SCP</i>
Stored Print Storage	1.2.840.10008.5.1.1.27	No	Yes
Hardcopy Grayscale Image Storage	1.2.840.10008.5.1.1.29	No	Yes
Hardcopy Color Image Storage	1.2.840.10008.5.1.1.30	No	Yes
Computed Radiography Image Storage	1.2.840.10008.5.1.4.1.1.1	No	Yes
Digital X-Ray Image Storage (Presentation)	1.2.840.10008.5.1.4.1.1.1.1	No	Yes
Digital X-Ray Image Storage (Processing)	1.2.840.10008.5.1.4.1.1.1.1.1	No	Yes
Digital Mammography Image Storage (Presentation)	1.2.840.10008.5.1.4.1.1.1.2	No	Yes
Digital Mammography Image Storage (Processing)	1.2.840.10008.5.1.4.1.1.1.2.1	No	Yes
Digital Intra-oral X-Ray Image Storage (Presentation)	1.2.840.10008.5.1.4.1.1.1.3	No	Yes
Digital Intra-oral X-Ray Image Storage (Processing)	1.2.840.10008.5.1.4.1.1.1.3.1	No	Yes
Ultrasound Multi-frame Image Storage	1.2.840.10008.5.1.4.1.1.3	No	Yes
Ultrasound Multi-frame Image Storage	1.2.840.10008.5.1.4.1.1.3.1	No	Yes
CT Image Storage	1.2.840.10008.5.1.4.1.1.2	No	Yes



MR Image Storage	1.2.840.10008.5.1.4.1.1.4	No	Yes
Enhanced MR Image Storage	1.2.840.10008.5.1.4.1.1.4.1	No	Yes
MR Spectroscopy Storage	1.2.840.10008.5.1.4.1.1.4.2	No	Yes
Ultrasound Image Storage	1.2.840.10008.5.1.4.1.1.6	No	Yes
Ultrasound Image Storage	1.2.840.10008.5.1.4.1.1.6.1	No	Yes
Secondary Capture Image Storage	1.2.840.10008.5.1.4.1.1.7	No	Yes
Multi-frame Single Bit Secondary Capture Image Storage	1.2.840.10008.5.1.4.1.1.7.1	No	Yes
Multi-frame Grayscale Byte Secondary Capture Image Storage	1.2.840.10008.5.1.4.1.1.7.2	No	Yes
Multi-frame Grayscale Word Secondary Capture Image Storage	1.2.840.10008.5.1.4.1.1.7.3	No	Yes
Multi-frame True Color Secondary Capture Image Storage	1.2.840.10008.5.1.4.1.1.7.4	No	Yes
Stand-alone Overlay Storage	1.2.840.10008.5.1.4.1.1.8	No	Yes
Stand-alone Curve Storage	1.2.840.10008.5.1.4.1.1.9	No	Yes
12-Lead ECG Waveform	1.2.840.10008.5.1.4.1.1.9.1.1	No	Yes
General ECG Waveform	1.2.840.10008.5.1.4.1.1.9.1.2	No	Yes
Ambulatory ECG Waveform	1.2.840.10008.5.1.4.1.1.9.1.3	No	Yes
Hemodynamic Waveform	1.2.840.10008.5.1.4.1.1.9.2.1	No	Yes
Cardiac Electrophysiology Waveform	1.2.840.10008.5.1.4.1.1.9.3.1	No	Yes
Basic Voice Audio Waveform	1.2.840.10008.5.1.4.1.1.9.4.1	No	Yes
Stand-alone Modality LUT Storage	1.2.840.10008.5.1.4.1.1.10	No	Yes
Stand-alone VOI LUT Storage	1.2.840.10008.5.1.4.1.1.11	No	Yes
Grayscale Softcopy Presentation State Storage	1.2.840.10008.5.1.4.1.1.11.1	No	Yes
Color Softcopy Presentation State Storage	1.2.840.10008.5.1.4.1.1.11.2	No	Yes
Pseudo Color Softcopy Presentation State Storage	1.2.840.10008.5.1.4.1.1.11.3	No	Yes
Blending Softcopy Presentation State Storage	1.2.840.10008.5.1.4.1.1.11.4	No	Yes
X-Ray Angiographic Image Storage	1.2.840.10008.5.1.4.1.1.12.1	No	Yes
X-Ray Radiofluoroscopic Image Storage	1.2.840.10008.5.1.4.1.1.12.2	No	Yes
X-Ray Angiographic Bi-plane Image Storage	1.2.840.10008.5.1.4.1.1.12.3	No	Yes
Nuclear Medicine Image Storage	1.2.840.10008.5.1.4.1.1.20	No	Yes
Raw Data Storage	1.2.840.10008.5.1.4.1.1.66	No	Yes
VL Endoscopic Image Storage	1.2.840.10008.5.1.4.1.1.77.1.1	No	Yes
Video Endoscopic Storage SOP Class	1.2.840.10008.5.1.4.1.1.77.1.1.1	No	Yes
VL Microscopic Image	1.2.840.10008.5.1.4.1.1.77.1.2	No	Yes
VL Slide-Coordinates Microscopic Image Storage	1.2.840.10008.5.1.4.1.1.77.1.3	No	Yes
VL Photographic Image Storage	1.2.840.10008.5.1.4.1.1.77.1.4	No	Yes

Ophthalmic Photography IOD 8 Bit Image Storage	1.2.840.10008.5.1.4.1.1.77.1.5.1	No	Yes
Ophthalmic Photography IOD 16 Bit Image Storage	1.2.840.10008.5.1.4.1.1.77.1.5.2	No	Yes
Stereometric Relationship Image Storage	1.2.840.10008.5.1.4.1.1.77.1.5.3	No	Yes
Basic Text SR	1.2.840.10008.5.1.4.1.1.88.11	No	Yes
Enhanced SR	1.2.840.10008.5.1.4.1.1.88.22	No	Yes
Comprehensive SR	1.2.840.10008.5.1.4.1.1.88.33	No	Yes
Mammography CAD SR	1.2.840.10008.5.1.4.1.1.88.50	No	Yes
Key Image Object Storage SOP Class	1.2.840.10008.5.1.4.1.1.88.59	No	Yes
X-Ray Radiation Dose SR	1.2.840.10008.5.1.4.1.1.88.67	No	Yes
Encapsulated PDF Storage SOP Class	1.2.840.10008.5.1.4.1.1.104.1	No	Yes
Positron Emission Tomography Image Storage	1.2.840.10008.5.1.4.1.1.128	No	Yes
Standalone PET Curve Storage	1.2.840.10008.5.1.4.1.1.129	No	Yes
RT Image Storage	1.2.840.10008.5.1.4.1.1.481.1	No	Yes
RT Dose Storage	1.2.840.10008.5.1.4.1.1.481.2	No	Yes
RT Structure Set Storage	1.2.840.10008.5.1.4.1.1.481.3	No	Yes
RT Beams Treatment Record Storage	1.2.840.10008.5.1.4.1.1.481.4	No	Yes
RT Plan Storage	1.2.840.10008.5.1.4.1.1.481.5	No	Yes
RT Brachy Treatment Record Storage	1.2.840.10008.5.1.4.1.1.481.6	No	Yes
RT Treatment Summary Record Storage	1.2.840.10008.5.1.4.1.1.481.7	No	Yes

## Association Establishment Policies

### General

The DICOM standard Application context shall be specified.

<i>Application Context Name</i>	1.2.840.10008.3.1.1.1
---------------------------------	-----------------------

### Number of Associations

The Storage SCP AE is internally limited by configuration in the number of simultaneous associations it may accept.

<i>Maximum Number of Simultaneous Associations (acceptor)</i>	100 (default)
---	---------------

### Asynchronous Nature

Multiple outstanding operations over a single association are not supported.

<i>Maximum Number of Outstanding Asynchronous Transactions</i>	1
--	---

### Implementation Identifying Information

<i>Implementation Class UID</i>	2.16.840.1.114444
<i>Implementation Version Name</i>	RVWR{x} <sup>1</sup>

<sup>1</sup> "{x}" representing the application version number. E.g. "1.6.0.9"

**Association Initiation by Real-World Activity**

The Storage SCP AE never initiates an association.

**Association Acceptance Policy**

The Storage SCP AE accepts associations from remote AEs offering valid Presentation Contexts.

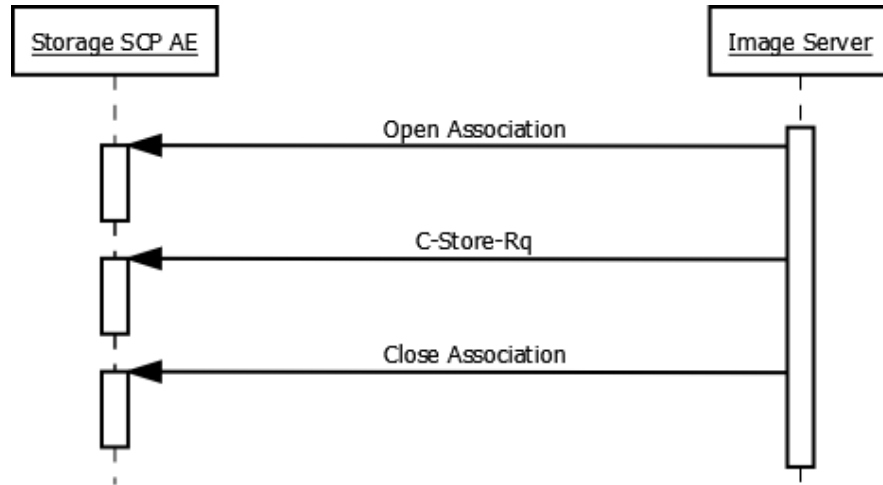


Figure 12—Receive Images Activity

**Accepted Presentation Contexts**

Note: transfer syntax support is consistent across Storage classes.

Table 4 Accepted Presentation Contexts					
Abstract Syntax		Transfer Syntax		Role	Ext. Neg.
Name	UID	Name	UID		
See Table 3	See Table 3	Implicit VR Little Endian	1.2.840.10008.1.2	SCP	None
		Explicit VR Little Endian	1.2.840.10008.1.2.1	SCP	None
		Explicit VR Big Endian	1.2.840.10008.1.2.2	SCP	None
		JPEG Process 1 Baseline	1.2.840.10008.1.2.4.50	SCP	None
		JPEG Process Ext 24	1.2.840.10008.1.2.4.51	SCP	None
		JPEG Process 14 Lossless	1.2.840.10008.1.2.4.57	SCP	None
		JPEG Process 14 Lossless SV1	1.2.840.10008.1.2.4.70	SCP	None
		JPEG Lossless	1.2.840.10008.1.2.4.80	SCP	None
		JPEG Near Lossless	1.2.840.10008.1.2.4.81	SCP	None
		JPEG 2000 Near Lossless	1.2.840.10008.1.2.4.90	SCP	None
		JPEG 2000	1.2.840.10008.1.2.4.91	SCP	None
		MPEG 2	1.2.840.10008.1.2.4.100	SCP	None

Table 5 <i>Storage SCP AE C-Store Status Return Reasons</i>			
<i>Service Status</i>	<i>Further Meaning</i>	<i>Error Code</i>	<i>Reason</i>
Refused	Out of resources	A700	Out of resources
Failed	Identifier Mismatch	A900	Identifier/SOP Class mismatch
	Not Supported	C001	Option is not supported in Reviewer system
	Volume Not Found	C002	Unable to find specified local store
	Not Responding	C003	The server is not responding. Try again later
	Not Authorized	C004	The system could not log you on
	Presentation Context Missing	C006	Cannot understand
Cancel	Request Cancelled	FE00	Cancelled
Pending	Pending	FF00	Pending
Success	Success	0000	Success

## Storage SCU AE

### SOP Classes

The Storage SCU AE provides Standard Conformance to the following SOP classes:

<i>Table 6 Supported SOP Classes</i>			
<i>SOP Class Name</i>	<i>SOP Class UID</i>	<i>SCU</i>	<i>SCP</i>
Stored Print Storage	1.2.840.10008.5.1.1.27	Yes	No
Hardcopy Grayscale Image Storage	1.2.840.10008.5.1.1.29	Yes	No
Hardcopy Color Image Storage	1.2.840.10008.5.1.1.30	Yes	No
Computed Radiography Image Storage	1.2.840.10008.5.1.4.1.1.1	Yes	No
Digital X-Ray Image Storage (Presentation)	1.2.840.10008.5.1.4.1.1.1.1	Yes	No
Digital X-Ray Image Storage (Processing)	1.2.840.10008.5.1.4.1.1.1.1.1	Yes	No
Digital Mammography Image Storage (Presentation)	1.2.840.10008.5.1.4.1.1.1.2	Yes	No
Digital Mammography Image Storage (Processing)	1.2.840.10008.5.1.4.1.1.1.2.1	Yes	No
Digital Intra-oral X-Ray Image Storage (Presentation)	1.2.840.10008.5.1.4.1.1.1.3	Yes	No
Digital Intra-oral X-Ray Image Storage (Processing)	1.2.840.10008.5.1.4.1.1.1.3.1	Yes	No
Ultrasound Multi-frame Image Storage	1.2.840.10008.5.1.4.1.1.3	Yes	No
Ultrasound Multi-frame Image Storage	1.2.840.10008.5.1.4.1.1.3.1	Yes	No
CT Image Storage	1.2.840.10008.5.1.4.1.1.2	Yes	No
MR Image Storage	1.2.840.10008.5.1.4.1.1.4	Yes	No
Enhanced MR Image Storage	1.2.840.10008.5.1.4.1.1.4.1	Yes	No
MR Spectroscopy Storage	1.2.840.10008.5.1.4.1.1.4.2	Yes	No
Ultrasound Image Storage	1.2.840.10008.5.1.4.1.1.6	Yes	No
Ultrasound Image Storage	1.2.840.10008.5.1.4.1.1.6.1	Yes	No
Secondary Capture Image Storage	1.2.840.10008.5.1.4.1.1.7	Yes	No
Multi-frame Single Bit Secondary Capture Image Storage	1.2.840.10008.5.1.4.1.1.7.1	Yes	No
Multi-frame Grayscale Byte Secondary Capture Image Storage	1.2.840.10008.5.1.4.1.1.7.2	Yes	No
Multi-frame Grayscale Word Secondary Capture Image Storage	1.2.840.10008.5.1.4.1.1.7.3	Yes	No
Multi-frame True Color Secondary Capture Image Storage	1.2.840.10008.5.1.4.1.1.7.4	Yes	No
Stand-alone Overlay Storage	1.2.840.10008.5.1.4.1.1.8	Yes	No
Stand-alone Curve Storage	1.2.840.10008.5.1.4.1.1.9	Yes	No
12-Lead ECG Waveform	1.2.840.10008.5.1.4.1.1.9.1.1	Yes	No
General ECG Waveform	1.2.840.10008.5.1.4.1.1.9.1.2	Yes	No
Ambulatory ECG Waveform	1.2.840.10008.5.1.4.1.1.9.1.3	Yes	No
Hemodynamic Waveform	1.2.840.10008.5.1.4.1.1.9.2.1	Yes	No
Cardiac Electrophysiology Waveform	1.2.840.10008.5.1.4.1.1.9.3.1	Yes	No
Basic Voice Audio Waveform	1.2.840.10008.5.1.4.1.1.9.4.1	Yes	No
Stand-alone Modality LUT Storage	1.2.840.10008.5.1.4.1.1.10	Yes	No
Stand-alone VOI LUT Storage	1.2.840.10008.5.1.4.1.1.11	Yes	No
Grayscale Softcopy Presentation State Storage	1.2.840.10008.5.1.4.1.1.11.1	Yes	No
Color Softcopy Presentation State Storage	1.2.840.10008.5.1.4.1.1.11.2	Yes	No
Pseudo Color Softcopy Presentation State Storage	1.2.840.10008.5.1.4.1.1.11.3	Yes	No
Blending Softcopy Presentation State Storage	1.2.840.10008.5.1.4.1.1.11.4	Yes	No
X-Ray Angiographic Image Storage	1.2.840.10008.5.1.4.1.1.12.1	Yes	No

X-Ray Radiofluoroscopic Image Storage	1.2.840.10008.5.1.4.1.1.12.2	Yes	No
X-Ray Angiographic Bi-plane Image Storage	1.2.840.10008.5.1.4.1.1.12.3	Yes	No
Nuclear Medicine Image Storage	1.2.840.10008.5.1.4.1.1.20	Yes	No
Raw Data Storage	1.2.840.10008.5.1.4.1.1.66	Yes	No
VL Endoscopic Image Storage	1.2.840.10008.5.1.4.1.1.77.1.1	Yes	No
Video Endoscopic Storage SOP Class	1.2.840.10008.5.1.4.1.1.77.1.1.1	Yes	No
VL Microscopic Image	1.2.840.10008.5.1.4.1.1.77.1.2	Yes	No
VL Slide-Coordinates Microscopic Image Storage	1.2.840.10008.5.1.4.1.1.77.1.3	Yes	No
VL Photographic Image Storage	1.2.840.10008.5.1.4.1.1.77.1.4	Yes	No
Ophthalmic Photography IOD 8 Bit Image Storage	1.2.840.10008.5.1.4.1.1.77.1.5.1	Yes	No
Ophthalmic Photography IOD 16 Bit Image Storage	1.2.840.10008.5.1.4.1.1.77.1.5.2	Yes	No
Stereometric Relationship Image Storage	1.2.840.10008.5.1.4.1.1.77.1.5.3	Yes	No
Basic Text SR	1.2.840.10008.5.1.4.1.1.88.11	Yes	No
Enhanced SR	1.2.840.10008.5.1.4.1.1.88.22	Yes	No
Comprehensive SR	1.2.840.10008.5.1.4.1.1.88.33	Yes	No
Mammography CAD SR	1.2.840.10008.5.1.4.1.1.88.50	Yes	No
Key Image Object Storage SOP Class	1.2.840.10008.5.1.4.1.1.88.59	Yes	No
X-Ray Radiation Dose SR	1.2.840.10008.5.1.4.1.1.88.67	Yes	No
Encapsulated PDF Storage SOP Class	1.2.840.10008.5.1.4.1.1.104.1	Yes	No
Positron Emission Tomography Image Storage	1.2.840.10008.5.1.4.1.1.128	Yes	No

## Association Establishment Policies

### General

The DICOM standard Application context shall be specified.

<i>Application Context Name</i>	1.2.840.10008.3.1.1.1
---------------------------------	-----------------------

### Number of Associations

The Storage SCU AE is not internally limited in the number of simultaneous associations it may initiate.

<i>Maximum Number of Simultaneous Associations (initiator)</i>	No Limit
--	----------

### Asynchronous Nature

Multiple outstanding operations over a single association are not supported.

<i>Maximum Number of Outstanding Asynchronous Transactions</i>	1
--	---

### Implementation Identifying Information

<i>Implementation Class UID</i>	2.16.840.1.114444
<i>Implementation Version Name</i>	RVWR{x} <sup>2</sup>

<sup>2</sup> "{x}" representing the application version number. E.g. "1.6.0.9"



## Association Initiation by Real-World Activity

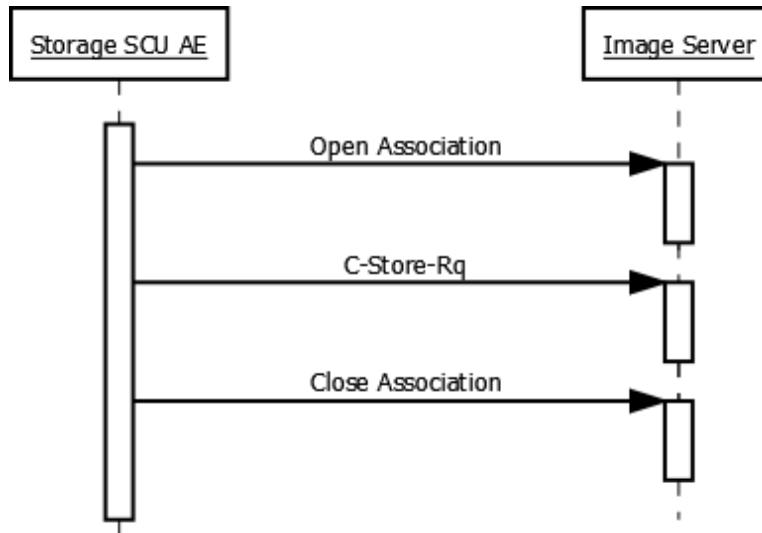


Figure 13—Send Images Activity

Table 7 <i>Proposed Presentation Contexts</i>					
Abstract Syntax		Transfer Syntax		Role	Ext. Neg.
Name	UID	Name	UID		
See Table 6	See Table 6	Implicit VR Little Endian	1.2.840.10008.1.2	SCU	None
		Explicit VR Little Endian	1.2.840.10008.1.2.1	SCU	None
		Explicit VR Big Endian	1.2.840.10008.1.2.2	SCU	None
		JPEG Process 1 Baseline	1.2.840.10008.1.2.4.50	SCU	None
		JPEG Process Ext 24	1.2.840.10008.1.2.4.51	SCU	None
		JPEG Process 14 Lossless	1.2.840.10008.1.2.4.57	SCU	None
		JPEG Process 14 Lossless SV1	1.2.840.10008.1.2.4.70	SCU	None
		JPEG Lossless	1.2.840.10008.1.2.4.80	SCU	None
		JPEG Near Lossless	1.2.840.10008.1.2.4.81	SCU	None
		JPEG 2000 Near Lossless	1.2.840.10008.1.2.4.90	SCU	None
		JPEG 2000	1.2.840.10008.1.2.4.91	SCU	None
		MPEG 2	1.2.840.10008.1.2.4.100	SCU	None

### Association Acceptance Policy

The Storage SCU AE never accepts an association.

## Query and Retrieve SCU AE

### SOP Classes

The Query and Retrieve SCU AE provides Standard Conformance to the following SOP classes:

<i>Table 8 Supported SOP Classes</i>			
<i>SOP Class Name</i>	<i>SOP Class UID</i>	<i>SCU</i>	<i>SCP</i>
Study Root Query/Retrieve Information Model—Find	1.2.840.10008.5.1.4.1.2.2.1	Yes	No
Study Root Query/Retrieve Information Model—Move	1.2.840.10008.5.1.4.1.2.2.2	Yes	No

### Association Establishment Policies

#### General

The DICOM standard Application context shall be specified.

<i>Application Context Name</i>	1.2.840.10008.3.1.1.1
---------------------------------	-----------------------

#### Number of Associations

The Query and Retrieve SCU AE is not internally limited in the number of simultaneous associations it may initiate.

<i>Maximum Number of Simultaneous Associations (initiator)</i>	No Limit
--	----------

#### Asynchronous Nature

Multiple outstanding operations over a single association are not supported.

<i>Maximum Number of Outstanding Asynchronous Transactions</i>	1
--	---

#### Implementation Identifying Information

<i>Implementation Class UID</i>	2.16.840.1.114444
<i>Implementation Version Name</i>	RVWR{x} <sup>3</sup>

<sup>3</sup> "{x}" representing the application version number. E.g. "1.6.0.9"

## Association Initiation by Real-World Activity

### Real-World Activity—Query Images

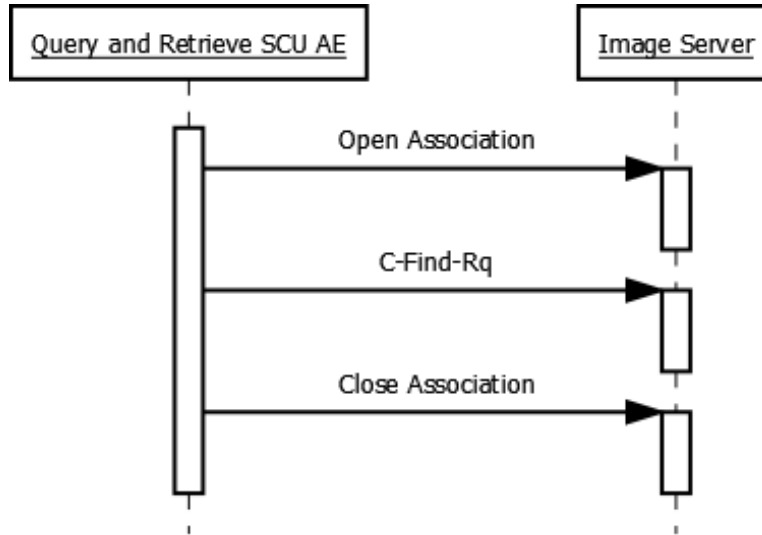


Figure 14—Query Images Activity

Table 9 <i>Proposed Presentation Contexts</i>					
Abstract Syntax		Transfer Syntax		Role	Ext. Neg.
Name	UID	Name	UID		
Study Root Query/Retrieve Information Model—Find	1.840.10008.5.1.4.1.2.2.1	Implicit VR Little Endian	1.2.840.10008.1.2	SCU	None

### SOP Specific Conformance to C-Find SOP Class

Query and Retrieve AE SCU provides standard conformance to the C-Find SOP class. Only a single information model, Study Root is supported.

Table 10 <i>Study Root Request Identifier for Query and Retrieve SCU AE</i>	
<i>Name</i>	<i>Tag</i>
<b>Study Level</b>	
Patient’s ID	(0010,0020)
Patient’s Name	(0010,0010)
Patient’s Sex	(0010,0040)
Study ID	(0020,0010)
Study Date	(0008,0020)
Study Accession No.	(0008,0050)
Study Description	(0008,1030)

## Real-World Activity—Retrieve Images

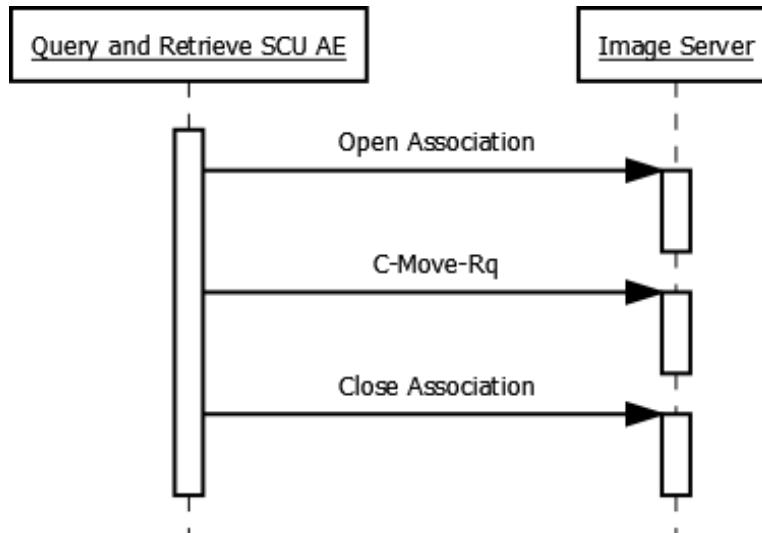


Figure 15—Retrieve Images Activity

Table 11 <i>Proposed Presentation Contexts</i>					
Abstract Syntax		Transfer Syntax		Role	Ext. Neg.
Name	UID	Name	UID		
Study Root Query/Retrieve Information Model—Move	1.840.10008.5.1.4.1.2.2.2	Implicit VR Little Endian	1.2.840.10008.1.2	SCU	None

### Sop Specific Conformance to C-Move SOP Class

Query and Retrieve AE SCU provides standard conformance to the C-Move SOP class.

### Association Acceptance Policy

The Query and Retrieve SCU AE does not accept associations.

## DICOM Media Exporter AE

### Conformance to DICOM Interchange of the Media Storage Service

DICOM Media Exporter AE supports DICOM Interchange of the Media Storage Service. It provides standard conformance as a FSC as defined in part 10 of the DICOM standard.

*NOTE: The DICOM Media Exporter AE is agnostic with respect to transfer syntax as an FSC for Image Storage classes. Image instances included in a build job production order receive no conversion/post-processing. Standard conformant application profiles are only possible if images to be written already match profile transfer syntax options.*

Table 12 Supported Application Profiles			
Application Profiles Supported	Real-World Activity	Roles	SC Option
STD-GEN-CD	Store Images on DICOM DISC	FSC	Interchange
STD-GEN-SEC-CD	Store Images on DICOM DISC	FSC	Interchange
STD-GEN-DVD	Store Images on DICOM DISC	FSC	Interchange
STD-GEN-SEC-DVD	Store Images on DICOM DISC	FSC	Interchange

### File Meta Information

Implementation Class UID	2.16.840.1.114444
Implementation Version Name	RVWR{x} <sup>4</sup>

### Real-World Activity—Store Images on DICOM Media

The DICOM Media Exporter AE exports images as DICOM files to the user selected media. At the user's option it can act as a FSC, re-identify patient demographics, produce Secure DICOM files<sup>5</sup> as well as perform DISC verification.

### Options

DICOM DISC Writer AE supports the SOP classes and Transfer Syntaxes listed in the table below.

Table 13 Supported IODs, SOP Classes and Transfer Syntaxes			
IOD	SOP Class UID	Transfer Syntax	Transfer Syntax UID
Basic Directory	1.2.840.10008.1.3.10	Explicit VR Little Endian Uncompressed	1.2.840.10008.1.2.1
Stored Print Storage	1.2.840.10008.5.1.1.27	Refer to Conformance Note.	Refer to Conformance Note.
Hardcopy Grayscale Image Storage	1.2.840.10008.5.1.1.29		
Hardcopy Color Image Storage	1.2.840.10008.5.1.1.30		
Computed Radiography Image Storage	1.2.840.10008.5.1.4.1.1.1		
Digital X-Ray Image Storage (Presentation)	1.2.840.10008.5.1.4.1.1.1.1		

<sup>4</sup> "{x}" representing the application version number. E.g. "1.6.0.9"

<sup>5</sup> Refer to the Security section of this document for DICOM conformance specifics.

Digital X-Ray Image Storage (Processing)	1.2.840.10008.5.1.4.1.1.1.1.1		
Digital Mammography Image Storage (Presentation)	1.2.840.10008.5.1.4.1.1.1.2		
Digital Mammography Image Storage (Processing)	1.2.840.10008.5.1.4.1.1.1.2.1		
Digital Intra-oral X-Ray Image Storage (Presentation)	1.2.840.10008.5.1.4.1.1.1.3		
Digital Intra-oral X-Ray Image Storage (Processing)	1.2.840.10008.5.1.4.1.1.1.3.1		
Ultrasound Multi-frame Image Storage	1.2.840.10008.5.1.4.1.1.3		
Ultrasound Multi-frame Image Storage	1.2.840.10008.5.1.4.1.1.3.1		
CT Image Storage	1.2.840.10008.5.1.4.1.1.2		
MR Image Storage	1.2.840.10008.5.1.4.1.1.4		
Enhanced MR Image Storage	1.2.840.10008.5.1.4.1.1.4.1		
MR Spectroscopy Storage	1.2.840.10008.5.1.4.1.1.4.2		
Ultrasound Image Storage	1.2.840.10008.5.1.4.1.1.6		
Ultrasound Image Storage	1.2.840.10008.5.1.4.1.1.6.1		
Secondary Capture Image Storage	1.2.840.10008.5.1.4.1.1.7		
Multi-frame Single Bit Secondary Capture Image Storage	1.2.840.10008.5.1.4.1.1.7.1		
Multi-frame Grayscale Byte Secondary Capture Image Storage	1.2.840.10008.5.1.4.1.1.7.2		
Multi-frame Grayscale Word Secondary Capture Image Storage	1.2.840.10008.5.1.4.1.1.7.3		
Multi-frame True Color Secondary Capture Image Storage	1.2.840.10008.5.1.4.1.1.7.4		
Stand-alone Overlay Storage	1.2.840.10008.5.1.4.1.1.8		
Stand-alone Curve Storage	1.2.840.10008.5.1.4.1.1.9		
12-Lead ECG Waveform	1.2.840.10008.5.1.4.1.1.9.1.1		
General ECG Waveform	1.2.840.10008.5.1.4.1.1.9.1.2		
Ambulatory ECG Waveform	1.2.840.10008.5.1.4.1.1.9.1.3		
Hemodynamic Waveform	1.2.840.10008.5.1.4.1.1.9.2.1		
Cardiac Electrophysiology Waveform	1.2.840.10008.5.1.4.1.1.9.3.1		
Basic Voice Audio Waveform	1.2.840.10008.5.1.4.1.1.9.4.1		
Stand-alone Modality LUT Storage	1.2.840.10008.5.1.4.1.1.10		
Stand-alone VOI LUT Storage	1.2.840.10008.5.1.4.1.1.11		
Grayscale Softcopy Presentation State Storage	1.2.840.10008.5.1.4.1.1.11.1		
Color Softcopy Presentation State Storage	1.2.840.10008.5.1.4.1.1.11.2		
Pseudo Color Softcopy Presentation State Storage	1.2.840.10008.5.1.4.1.1.11.3		
Blending Softcopy Presentation State Storage	1.2.840.10008.5.1.4.1.1.11.4		
X-Ray Angiographic Image Storage	1.2.840.10008.5.1.4.1.1.12.1		

X-Ray Radiofluoroscopic Image Storage	1.2.840.10008.5.1.4.1.1.12.2		
X-Ray Angiographic Bi-plane Image Storage	1.2.840.10008.5.1.4.1.1.12.3		
Nuclear Medicine Image Storage	1.2.840.10008.5.1.4.1.1.20		
Raw Data Storage	1.2.840.10008.5.1.4.1.1.66		
VL Endoscopic Image Storage	1.2.840.10008.5.1.4.1.1.77.1.1		
Video Endoscopic Storage SOP Class	1.2.840.10008.5.1.4.1.1.77.1.1.1		
VL Microscopic Image	1.2.840.10008.5.1.4.1.1.77.1.2		
VL Slide-Coordinates Microscopic Image Storage	1.2.840.10008.5.1.4.1.1.77.1.3		
VL Photographic Image Storage	1.2.840.10008.5.1.4.1.1.77.1.4		
Ophthalmic Photography IOD 8 Bit Image Storage	1.2.840.10008.5.1.4.1.1.77.1.5.1		
Ophthalmic Photography IOD 16 Bit Image Storage	1.2.840.10008.5.1.4.1.1.77.1.5.2		
Stereometric Relationship Image Storage	1.2.840.10008.5.1.4.1.1.77.1.5.3		
Basic Text SR	1.2.840.10008.5.1.4.1.1.88.11		
Enhanced SR	1.2.840.10008.5.1.4.1.1.88.22		
Comprehensive SR	1.2.840.10008.5.1.4.1.1.88.33		
Mammography CAD SR	1.2.840.10008.5.1.4.1.1.88.50		
Key Image Object Storage SOP Class	1.2.840.10008.5.1.4.1.1.88.59		
X-Ray Radiation Dose SR	1.2.840.10008.5.1.4.1.1.88.67		
Encapsulated PDF Storage SOP Class	1.2.840.10008.5.1.4.1.1.104.1		
Positron Emission Tomography Image Storage	1.2.840.10008.5.1.4.1.1.128		

## DICOM Media Importer AE

### *Conformance to DICOM Interchange of the Media Storage Service*

DICOM Media Importer AE supports DICOM Interchange of the Media Storage Service. It provides standard conformance as a FSR as defined part 10 of the DICOM standard.

*NOTE: The DICOM Media Importer AE is agnostic with respect to transfer syntax as an FSR for Image Storage classes. Conversion/post-processing of images is delegated to the Storage SCU AE.*

<i>Table 14 Supported Application Profiles</i>			
<i>Application Profiles Supported</i>	<i>Real-World Activity</i>	<i>Roles</i>	<i>SC Option</i>
STD-GEN-CD	Store Images on DICOM DISC	FSR	Interchange
STD-GEN-SEC-CD	Store Images on DICOM DISC	FSR	Interchange
STD-GEN-DVD	Store Images on DICOM DISC	FSR	Interchange
STD-GEN-SEC-DVD	Store Images on DICOM DISC	FSR	Interchange

### Initiation by Real-World Activity

#### *Activity—Browse Media*

For supported media types the DICOM Media Importer AE acts as an FSR to query the DICOMDIR for information about the images included in the contained file set. Where the DICOMDIR is unavailable or in the case of other media types the DICOM Media Importer AE will recursively scan the file system specified by the user for DICOM image files.

#### *Activity—Import Images*

The DICOM Media Importer AE acts as an FSR to import DICOM image instance files into the Reviewer application from the user specified media.

### Options

DICOM Media Importer AE supports the SOP classes and Transfer Syntaxes listed in the table below.

<i>Table 15 Supported IODs, SOP Classes and Transfer Syntaxes</i>			
<i>IOD</i>	<i>SOP Class UID</i>	<i>Transfer Syntax</i>	<i>Transfer Syntax UID</i>
Basic Directory	1.2.840.10008.1.3.10	Explicit VR Little Endian Uncompressed	1.2.840.10008.1.2.1
Stored Print Storage	1.2.840.10008.5.1.1.27	Refer to Conformance Note.	Refer to Conformance Note.
Hardcopy Grayscale Image Storage	1.2.840.10008.5.1.1.29		
Hardcopy Color Image Storage	1.2.840.10008.5.1.1.30		
Computed Radiography Image Storage	1.2.840.10008.5.1.4.1.1.1		



Digital X-Ray Image Storage (Presentation)	1.2.840.10008.5.1.4.1.1.1.1		
Digital X-Ray Image Storage (Processing)	1.2.840.10008.5.1.4.1.1.1.1.1		
Digital Mammography Image Storage (Presentation)	1.2.840.10008.5.1.4.1.1.1.2		
Digital Mammography Image Storage (Processing)	1.2.840.10008.5.1.4.1.1.1.2.1		
Digital Intra-oral X-Ray Image Storage (Presentation)	1.2.840.10008.5.1.4.1.1.1.3		
Digital Intra-oral X-Ray Image Storage (Processing)	1.2.840.10008.5.1.4.1.1.1.3.1		
Ultrasound Multi-frame Image Storage	1.2.840.10008.5.1.4.1.1.3		
Ultrasound Multi-frame Image Storage	1.2.840.10008.5.1.4.1.1.3.1		
CT Image Storage	1.2.840.10008.5.1.4.1.1.2		
MR Image Storage	1.2.840.10008.5.1.4.1.1.4		
Enhanced MR Image Storage	1.2.840.10008.5.1.4.1.1.4.1		
MR Spectroscopy Storage	1.2.840.10008.5.1.4.1.1.4.2		
Ultrasound Image Storage	1.2.840.10008.5.1.4.1.1.6		
Ultrasound Image Storage	1.2.840.10008.5.1.4.1.1.6.1		
Secondary Capture Image Storage	1.2.840.10008.5.1.4.1.1.7		
Multi-frame Single Bit Secondary Capture Image Storage	1.2.840.10008.5.1.4.1.1.7.1		
Multi-frame Grayscale Byte Secondary Capture Image Storage	1.2.840.10008.5.1.4.1.1.7.2		
Multi-frame Grayscale Word Secondary Capture Image Storage	1.2.840.10008.5.1.4.1.1.7.3		

Multi-frame True Color Secondary Capture Image Storage	1.2.840.10008.5.1.4.1.1.7.4		
Stand-alone Overlay Storage	1.2.840.10008.5.1.4.1.1.8		
Stand-alone Curve Storage	1.2.840.10008.5.1.4.1.1.9		
12-Lead ECG Waveform	1.2.840.10008.5.1.4.1.1.9.1.1		
General ECG Waveform	1.2.840.10008.5.1.4.1.1.9.1.2		
Ambulatory ECG Waveform	1.2.840.10008.5.1.4.1.1.9.1.3		
Hemodynamic Waveform	1.2.840.10008.5.1.4.1.1.9.2.1		
Cardiac Electrophysiology Waveform	1.2.840.10008.5.1.4.1.1.9.3.1		
Basic Voice Audio Waveform	1.2.840.10008.5.1.4.1.1.9.4.1		
Stand-alone Modality LUT Storage	1.2.840.10008.5.1.4.1.1.10		
Stand-alone VOI LUT Storage	1.2.840.10008.5.1.4.1.1.11		
Grayscale Softcopy Presentation State Storage	1.2.840.10008.5.1.4.1.1.11.1		
Color Softcopy Presentation State Storage	1.2.840.10008.5.1.4.1.1.11.2		
Pseudo Color Softcopy Presentation State Storage	1.2.840.10008.5.1.4.1.1.11.3		
Blending Softcopy Presentation State Storage	1.2.840.10008.5.1.4.1.1.11.4		
X-Ray Angiographic Image Storage	1.2.840.10008.5.1.4.1.1.12.1		
X-Ray Radiofluoroscopic Image Storage	1.2.840.10008.5.1.4.1.1.12.2		
X-Ray Angiographic Bi-plane Image Storage	1.2.840.10008.5.1.4.1.1.12.3		

Nuclear Medicine Image Storage	1.2.840.10008.5.1.4.1.1.20		
Raw Data Storage	1.2.840.10008.5.1.4.1.1.66		
VL Endoscopic Image Storage	1.2.840.10008.5.1.4.1.1.77.1.1		
Video Endoscopic Storage SOP Class	1.2.840.10008.5.1.4.1.1.77.1.1.1		
VL Microscopic Image	1.2.840.10008.5.1.4.1.1.77.1.2		
VL Slide-Coordinates Microscopic Image Storage	1.2.840.10008.5.1.4.1.1.77.1.3		
VL Photographic Image Storage	1.2.840.10008.5.1.4.1.1.77.1.4		
Ophthalmic Photography IOD 8 Bit Image Storage	1.2.840.10008.5.1.4.1.1.77.1.5.1		
Ophthalmic Photography IOD 16 Bit Image Storage	1.2.840.10008.5.1.4.1.1.77.1.5.2		
Stereometric Relationship Image Storage	1.2.840.10008.5.1.4.1.1.77.1.5.3		
Basic Text SR	1.2.840.10008.5.1.4.1.1.88.11		
Enhanced SR	1.2.840.10008.5.1.4.1.1.88.22		
Comprehensive SR	1.2.840.10008.5.1.4.1.1.88.33		
Mammography CAD SR	1.2.840.10008.5.1.4.1.1.88.50		
Key Image Object Storage SOP Class	1.2.840.10008.5.1.4.1.1.88.59		
X-Ray Radiation Dose SR	1.2.840.10008.5.1.4.1.1.88.67		
Encapsulated PDF Storage SOP Class	1.2.840.10008.5.1.4.1.1.104.1		
Positron Emission Tomography Image Storage	1.2.840.10008.5.1.4.1.1.128		

## Import Integrator AE

### SOP Classes

The Import Integrator AE provides Standard Conformance to the following SOP classes:

<i>Table 16 Supported SOP Classes</i>			
<i>SOP Class Name</i>	<i>SOP Class UID</i>	<i>SCU</i>	<i>SCP</i>
Storage Commitment Model Push	1.2.840.10008.1.20.1	Yes	No
Modality Performed Procedure Step	1.2.840.10008.3.1.2.3.3	Yes	No
Modality Work List Information Model—C-Find	1.2.840.10008.5.1.4.31	Yes	No

### Association Establishment Policies

#### General

The DICOM standard Application context shall be specified.

<i>Application Context Name</i>	1.2.840.10008.3.1.1.1
---------------------------------	-----------------------

#### Number of Associations

The Import Integrator AE is not internally limited in the number of simultaneous associations it may initiate.

<i>Maximum Number of Simultaneous Associations (initiator)</i>	No Limit
--	----------

#### Asynchronous Nature

Multiple outstanding operations over a single association are not supported.

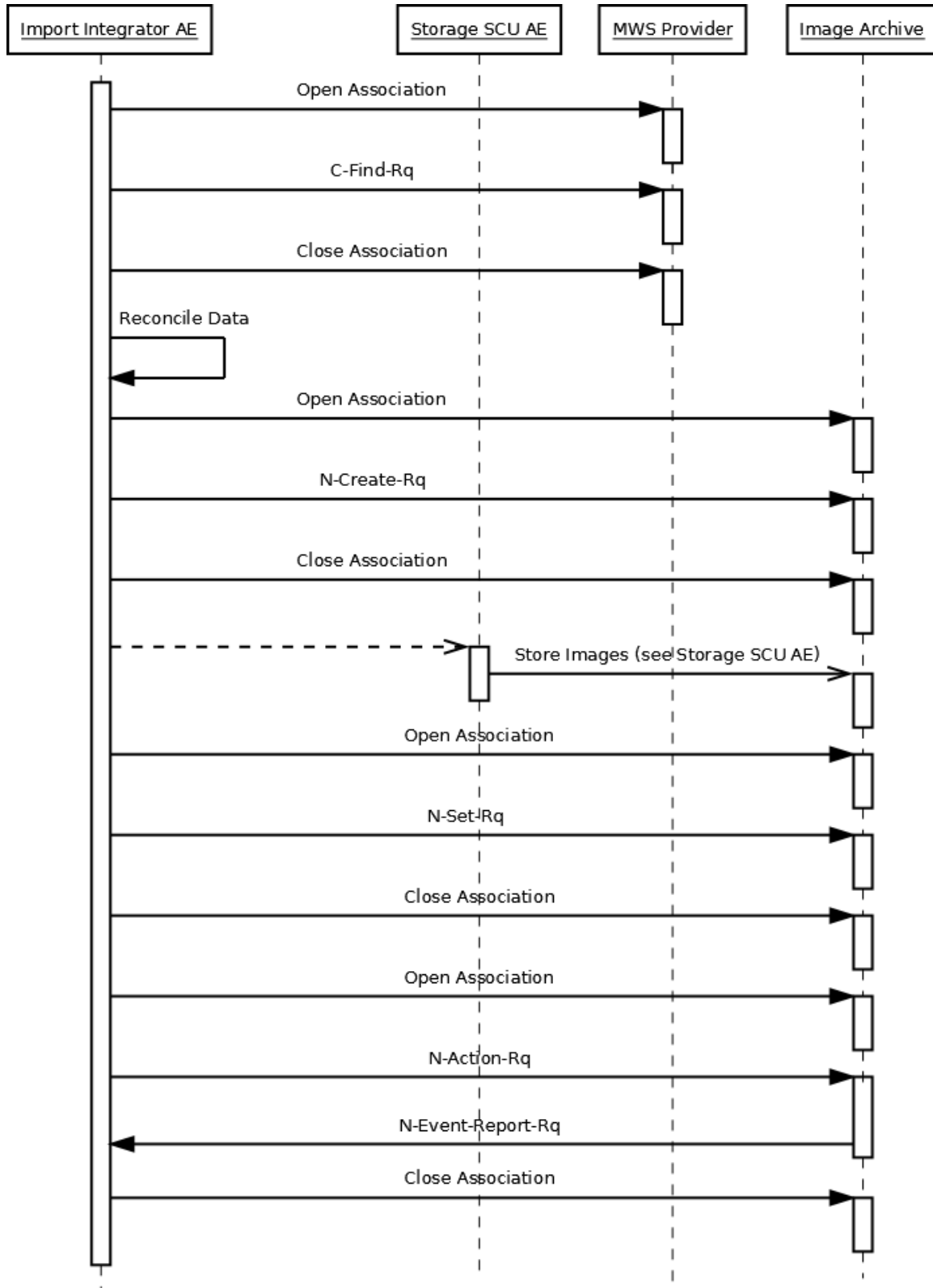
<i>Maximum Number of Outstanding Asynchronous Transactions</i>	1
--	---

#### Implementation Identifying Information

<i>Implementation Class UID</i>	2.16.840.1.114444
<i>Implementation Version Name</i>	RVWR{x} <sup>6</sup>

<sup>6</sup> “{x}” representing the application version number. E.g. “1.6.0.9”

## Association Initiation by Real-World Activity



16—Perform Scheduled Image Import Activity

**Table 17**  
*Proposed Presentation Contexts*

Abstract Syntax		Transfer Syntax		Role	Ext. Neg.
Name	UID	Name	UID		
Storage Commitment Model Push	1.2.840.10008.1.20.1	Implicit VR Little Endian	1.2.840.10008.1.2	SCU	None
Modality Performed Procedure Step	1.2.840.10008.3.1.2.3.3	Implicit VR Little Endian	1.2.840.10008.1.2	SCU	None
Modality Work List Information Model—C-Find	1.2.840.10008.5.1.4.31	Implicit VR Little Endian	1.2.840.10008.1.2	SCU	None

### Sop Specific Conformance to Modality Work List Information Model—C-Find SOP Class

Import Integrator AE provides standard conformance to the SOP class.

**Table 18**  
*Query Key Attributes in Modality Work List Query*

<i>Name</i>	<i>Tag</i>
<b>Study Level</b>	
Modality	(0008,0060)
Patient's Name	(0010,0010)
Patient's ID	(0010,0020)
Station AE Title	(0040,0241)
Start Date	(0040,0244)

### Sop Specific Conformance to Storage Commitment Push Model SOP Class

Import Integrator AE provides standard conformance to the SOP class. The Import Integrator AE may receive the N-Event-Report within the same association as the N-Action-Rq was made or in a subsequent association.

### Sop Specific Conformance to Modality Performed Procedure Step SOP Class

Import Integrator AE provides standard conformance to the SOP class.

<i>Name</i>	<i>Tag</i>
<b>N-CREATE</b>	
Patient's ID	(0010,0020)
Patient's DOB	(0010,0030)
Patient's Sex	(0010,0040)
Study ID	(0020,0010)
Performed Station AE	(0040,0241)
Performed Station Name	(0040,0242)
Performed Location	(0040,0243)
PPS Start Date	(0040,0244)

PPS Start Time	(0040,0245)
PPS End Date	(0040,0250)
PPS End Time	(0040,0251)
PPS Status	(0040,0252)
PPS ID	(0040,0253)
PPS Description	(0040,0254)
Performed Protocol Code Sequence	(0040,0260)
<b>N-SET</b>	
PPS End Date	(0040,0250)
PPS Status	(0040,0252)
PPS Description	(0040,0254)
Performed Protocol Code Sequence	(0040,0260)

### Association Acceptance Policy

The Import Integrator AE will accept associations in order to receive responses to a Storage Commitment request.

### Accepted Presentation Contexts

Table 19 <i>Accepted Presentation Contexts</i>					
Abstract Syntax		Transfer Syntax		Role	Ext. Neg.
Name	UID	Name	UID		
Storage Commitment Model Push	1.2.840.10008.1.20.1	Implicit VR Little Endian	1.2.840.10008.1.2	SCP	None
		Explicit VR Little Endian	1.2.840.10008.1.2.1	SCP	None
		Explicit VR Big Endian	1.2.840.10008.1.2.2	SCP	None
		JPEG Process 1 Baseline	1.2.840.10008.1.2.4.50	SCP	None
		JPEG Process Ext 24	1.2.840.10008.1.2.4.51	SCP	None
		JPEG Process 14 Lossless	1.2.840.10008.1.2.4.57	SCP	None
		JPEG Process 14 Lossless SV1	1.2.840.10008.1.2.4.70	SCP	None
		JPEG Lossless	1.2.840.10008.1.2.4.80	SCP	None
		JPEG Near Lossless	1.2.840.10008.1.2.4.81	SCP	None
		JPEG 2000 Near Lossless	1.2.840.10008.1.2.4.90	SCP	None
		JPEG 2000	1.2.840.10008.1.2.4.91	SCP	None
		MPEG 2	1.2.840.10008.1.2.4.100	SCP	None

Table 20 <i>N-Event-Report Status Return Reasons</i>			
<i>Service Status</i>	<i>Further Meaning</i>	<i>Error Code</i>	<i>Reason</i>
Success	Success	0000	Success
*	*	Any other status code.	The Association is aborted using A-ABORT and the request for storage commitment is treated as failed.



## Verification AE

### SOP Classes

The Verification AE provides Standard Conformance to the following SOP classes:

<i>Table 21 Supported SOP Classes</i>			
<i>SOP Class Name</i>	<i>SOP Class UID</i>	<i>SCU</i>	<i>SCP</i>
Verification	1.2.840.10008.1.1	Yes	Yes

### Association Establishment Policies

#### General

The DICOM standard Application context shall be specified.

<i>Application Context Name</i>	1.2.840.10008.3.1.1.1
---------------------------------	-----------------------

#### Number of Associations

The Verification AE is not internally limited in the number of simultaneous associations it may initiate.

<i>Maximum Number of Simultaneous Associations (initiator)</i>	No Limit
<i>Maximum Number of Simultaneous Associations (acceptor)</i>	100 (default)

#### Asynchronous Nature

Multiple outstanding operations over a single association are not supported.

<i>Maximum Number of Outstanding Asynchronous Transactions</i>	1
--	---

### Implementation Identifying Information

<i>Implementation Class UID</i>	2.16.840.1.114444
<i>Implementation Version Name</i>	RVWR{x} <sup>7</sup>

<sup>7</sup> "{x}" representing the application version number. E.g. "1.6.0.9"

## Association Initiation by Real-World Activity

### Activity—Request Verification

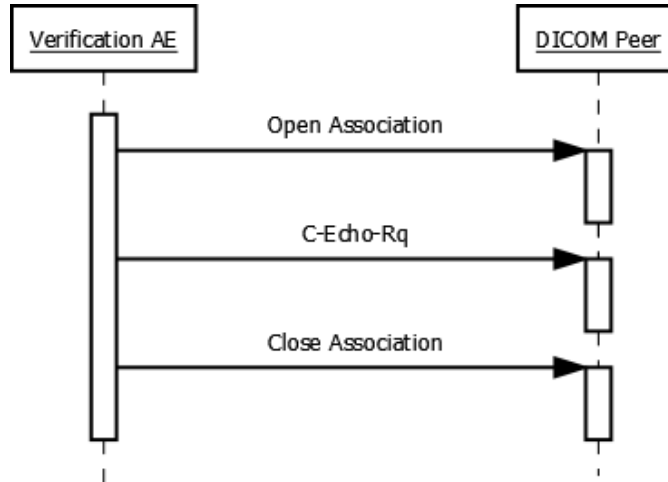


Figure 17—Request Verification Activity

Table 22 Proposed Presentation Contexts					
Abstract Syntax		Transfer Syntax		Role	Ext. Neg.
Name	UID	Name	UID		
Verification	1.2.840.10008.1.1	Implicit VR Little Endian	1.2.840.10008.1.2	SCU	None

### Association Acceptance for Real-World Activity—Accept Verification

The Verification AE accepts associations from remote AEs offering valid Presentation Contexts to fulfill the Accept Verification activity.

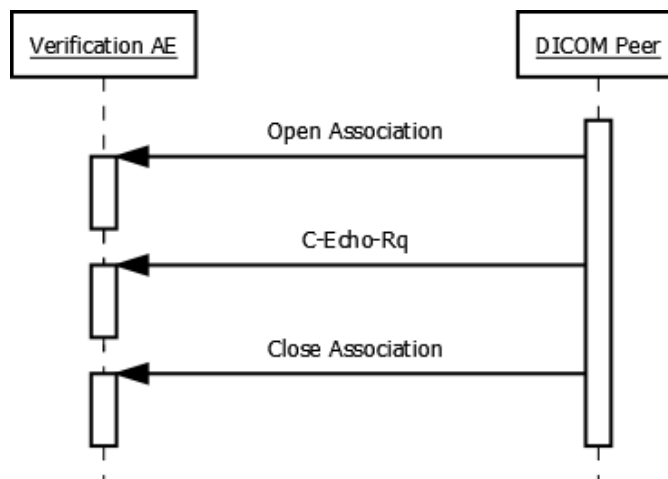


Figure 18—Accept Verification Activity

## Accepted Presentation Contexts

**Table 23**  
*Accepted Presentation Contexts*

Abstract Syntax		Transfer Syntax		Role	Ext. Neg.
Name	UID	Name	UID		
Verification	1.2.840.10008.1.1	Implicit VR Little Endian	1.2.840.10008.1.2	SCP	None
		Explicit VR Little Endian	1.2.840.10008.1.2.1	SCP	None
		Explicit VR Big Endian	1.2.840.10008.1.2.2	SCP	None
		JPEG Process 1 Baseline	1.2.840.10008.1.2.4.50	SCP	None
		JPEG Process Ext 24	1.2.840.10008.1.2.4.51	SCP	None
		JPEG Process 14 Lossless	1.2.840.10008.1.2.4.57	SCP	None
		JPEG Process 14 Lossless SV1	1.2.840.10008.1.2.4.70	SCP	None
		JPEG Lossless	1.2.840.10008.1.2.4.80	SCP	None
		JPEG Near Lossless	1.2.840.10008.1.2.4.81	SCP	None
		JPEG 2000 Near Lossless	1.2.840.10008.1.2.4.90	SCP	None
		JPEG 2000	1.2.840.10008.1.2.4.91	SCP	None
		MPEG 2	1.2.840.10008.1.2.4.100	SCP	None

## Communication Profiles

### Supported Communication Stacks

DICOM Upper Layer over TCP/IP as defined by part 8 of the DICOM standard is supported.

### TCP/IP Stack

The TCP/IP stack is inherited from the underlying host operating system.

### API

The application makes use of the Windows Socket 2 interface.

### Physical Media Support

Any physical medium supported by the host operating system can be used.

### Support of Extended Character Sets

The Reviewer Application supports the ISO\_IR 100 (ISO/IEC 8859-1) character set.

## Configuration

Configuration of the Reviewer Application may be accomplished from within the application or by editing the underlying XML documents.

## Configurable Parameters

### Host Configuration

- Port number
- Binding address
- Maximum PDU size
- Maximum concurrent accepted connections
- Send/Receive buffer size
- Receive timeout
- Socket linger
- Socket keep-alive

### Peer Configuration

- AE title
- IP address
- Port

## Security

### Security Profiles

The DICOM Media Exporter AE and DICOM Media Importer AE provide standard conformance to the Basic DICOM Media Security Profile.

### Association Level Security

The Reviewer application does not support any specific association level security.

### Application Level Security

The Reviewer application does not support any specific application level security.